

Level 2

À qui appartient ce bouton ?

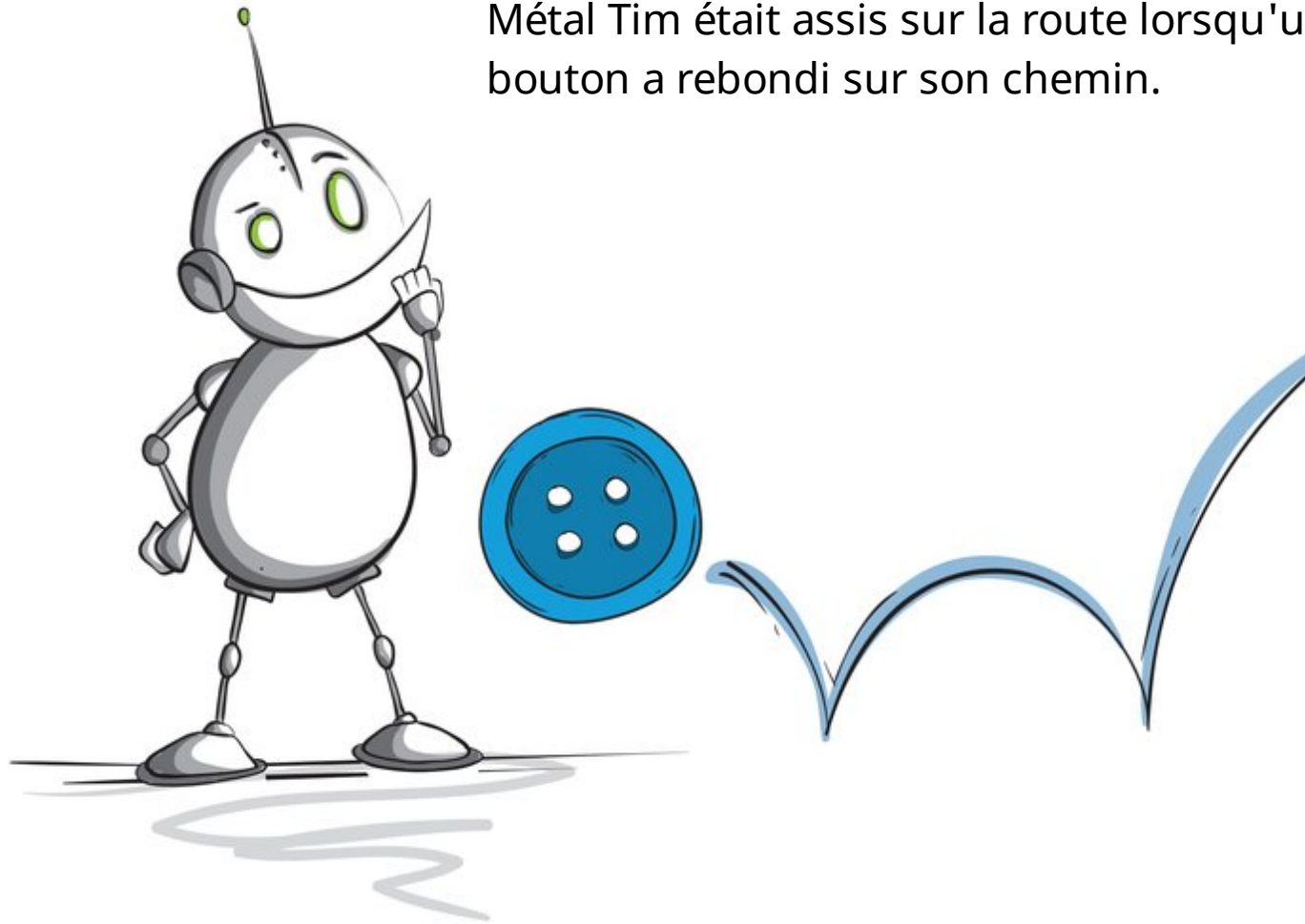
Original Publisher: Book Dash

Author: Paul Kennedy

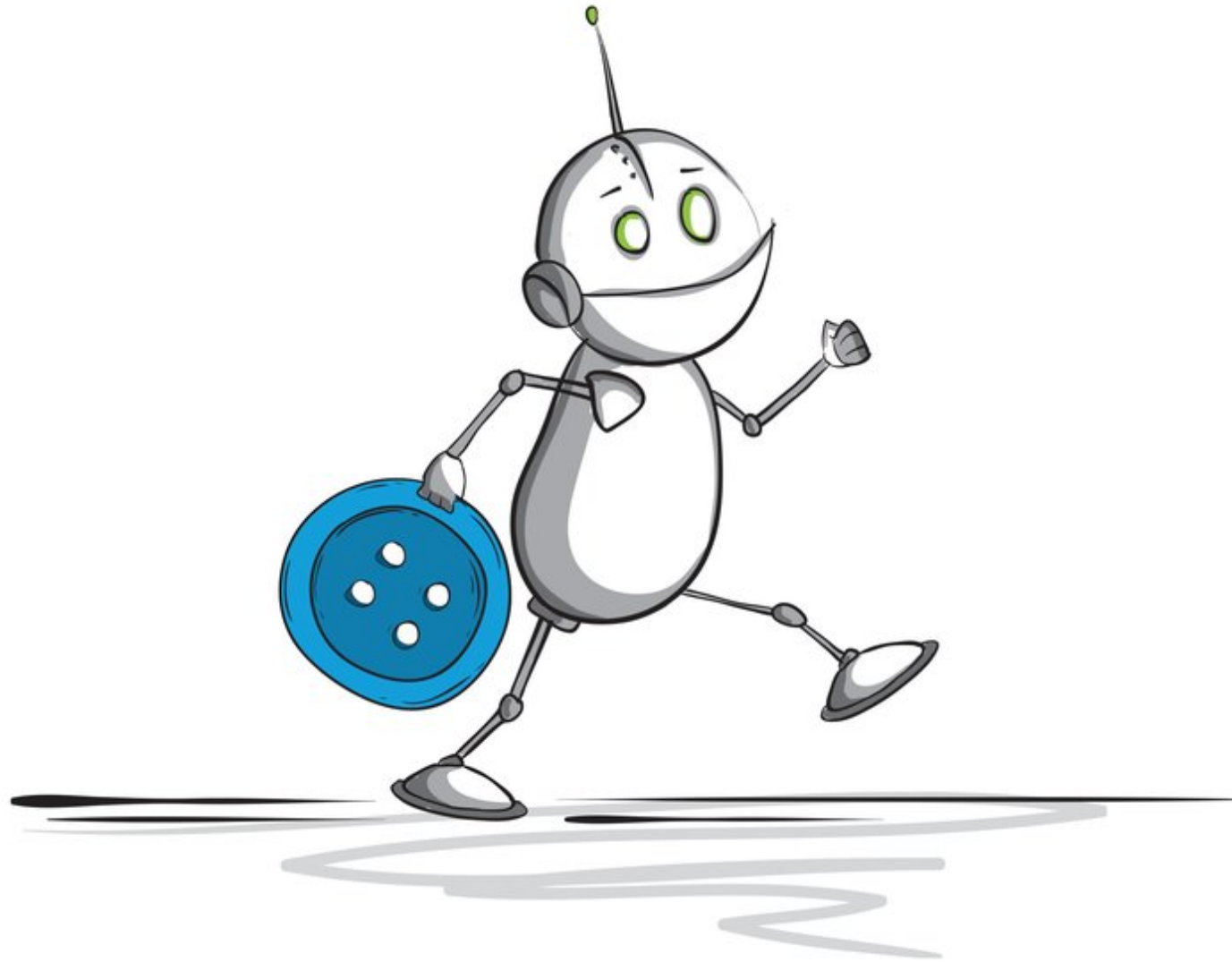
Illustrator: James Woolley

Translator: Cyrille Largillier

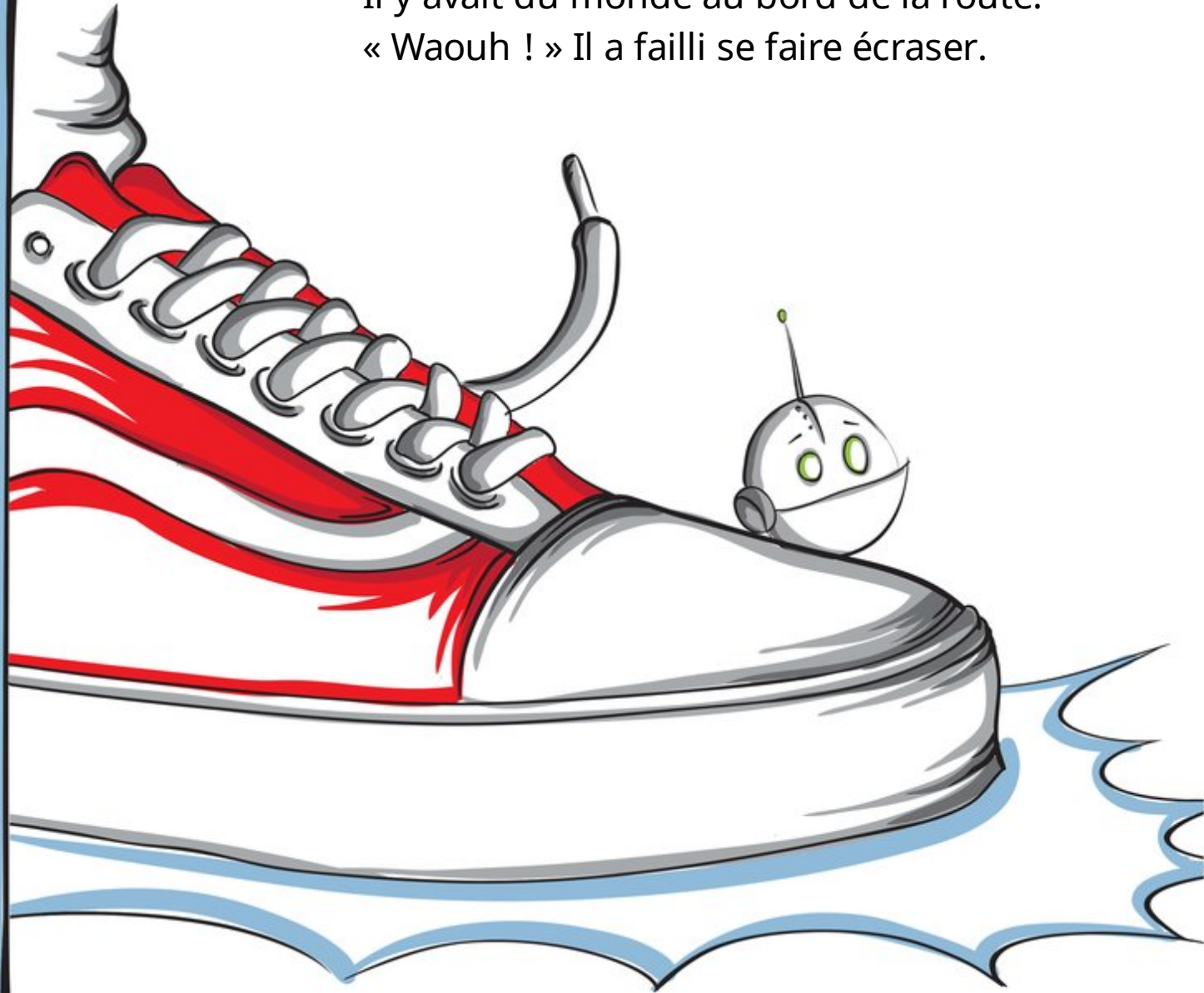
Métal Tim était assis sur la route lorsqu'un bouton a rebondi sur son chemin.

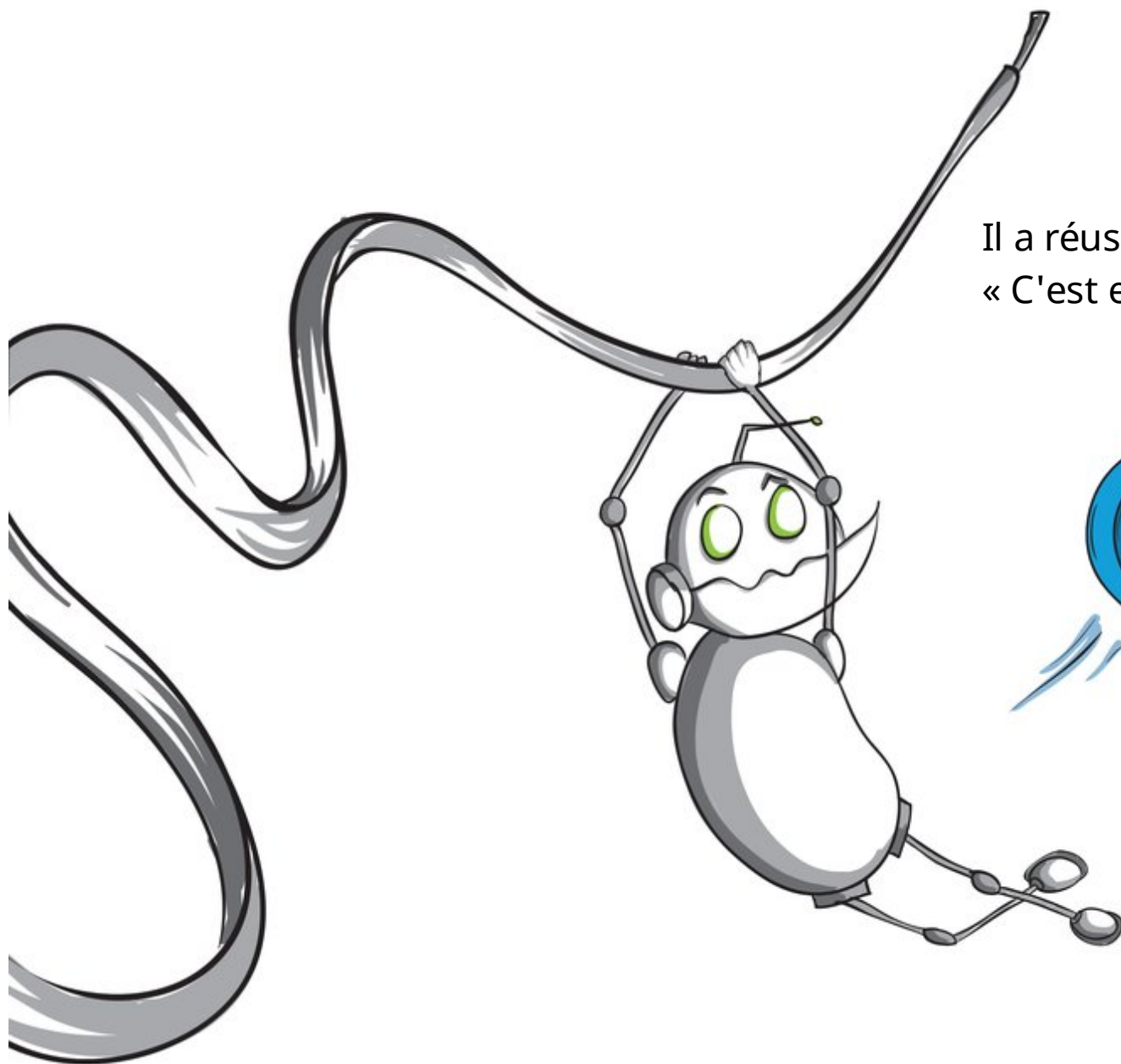


« Je me demande d'où cela vient », a-t-il déclaré.
Il voulait le découvrir.



Il y avait du monde au bord de la route.
« Waouh ! » Il a failli se faire écraser.





Il a réussi à s'échapper.
« C'est effrayant ici », dit-il.

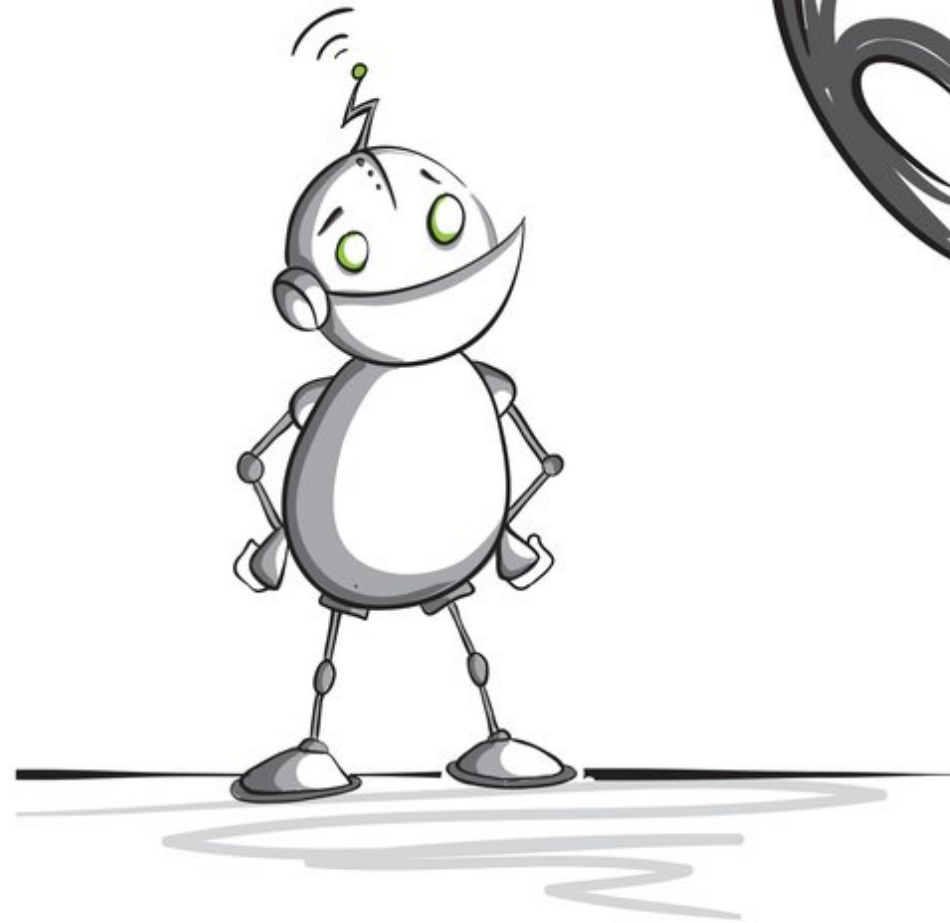


« Hé là, est-ce votre bouton ? »



L'homme vert ne dit rien. Il devient juste rouge.
« Quelle personne grossière. »

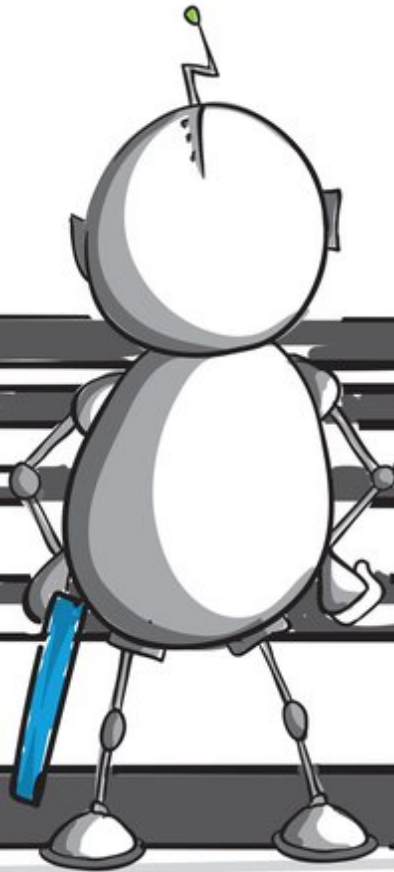
Métal Tim continua de chercher.
« À qui est ce bouton ? »



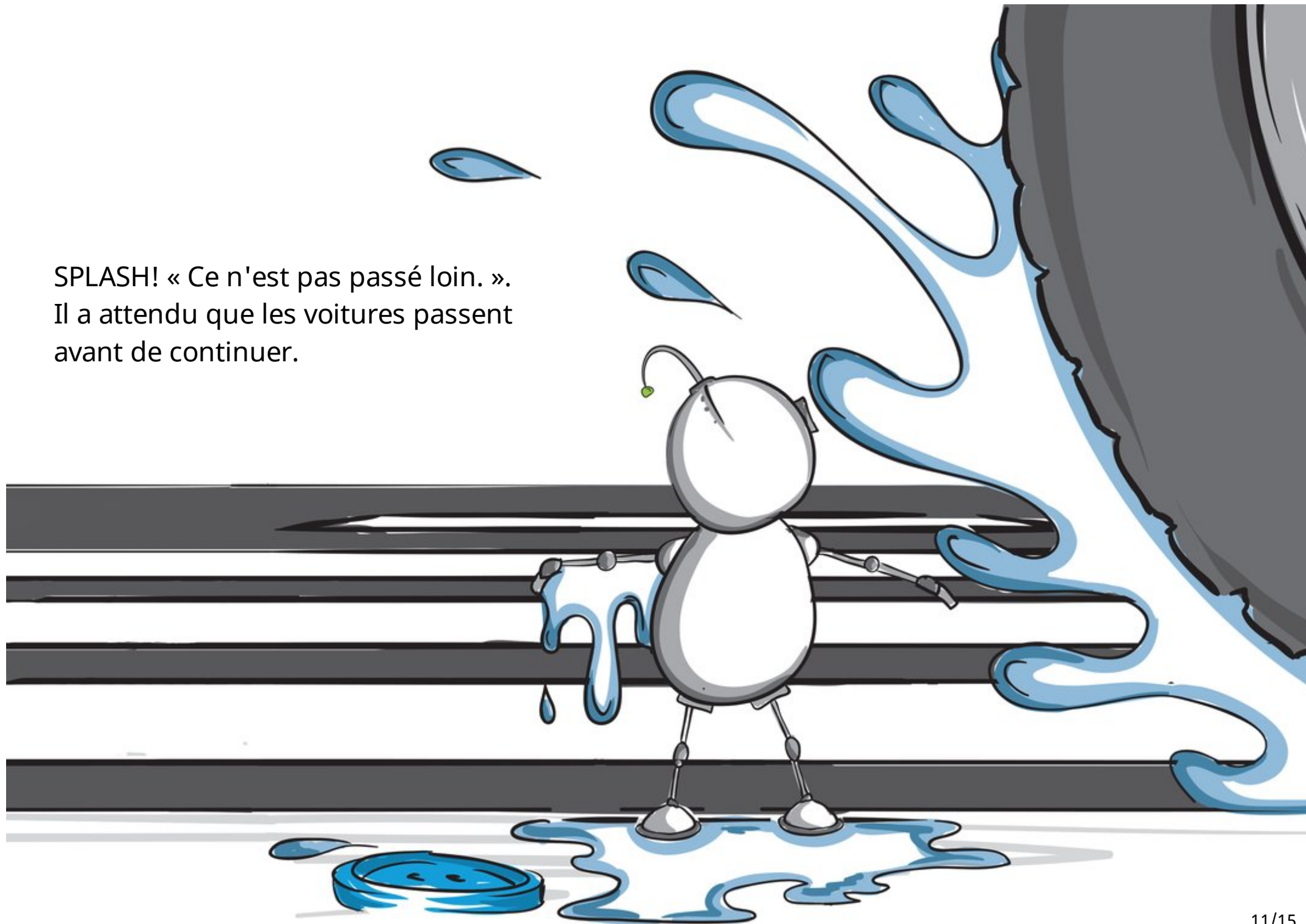
« Waouh .. ! ... au moins, il est sympathique. »



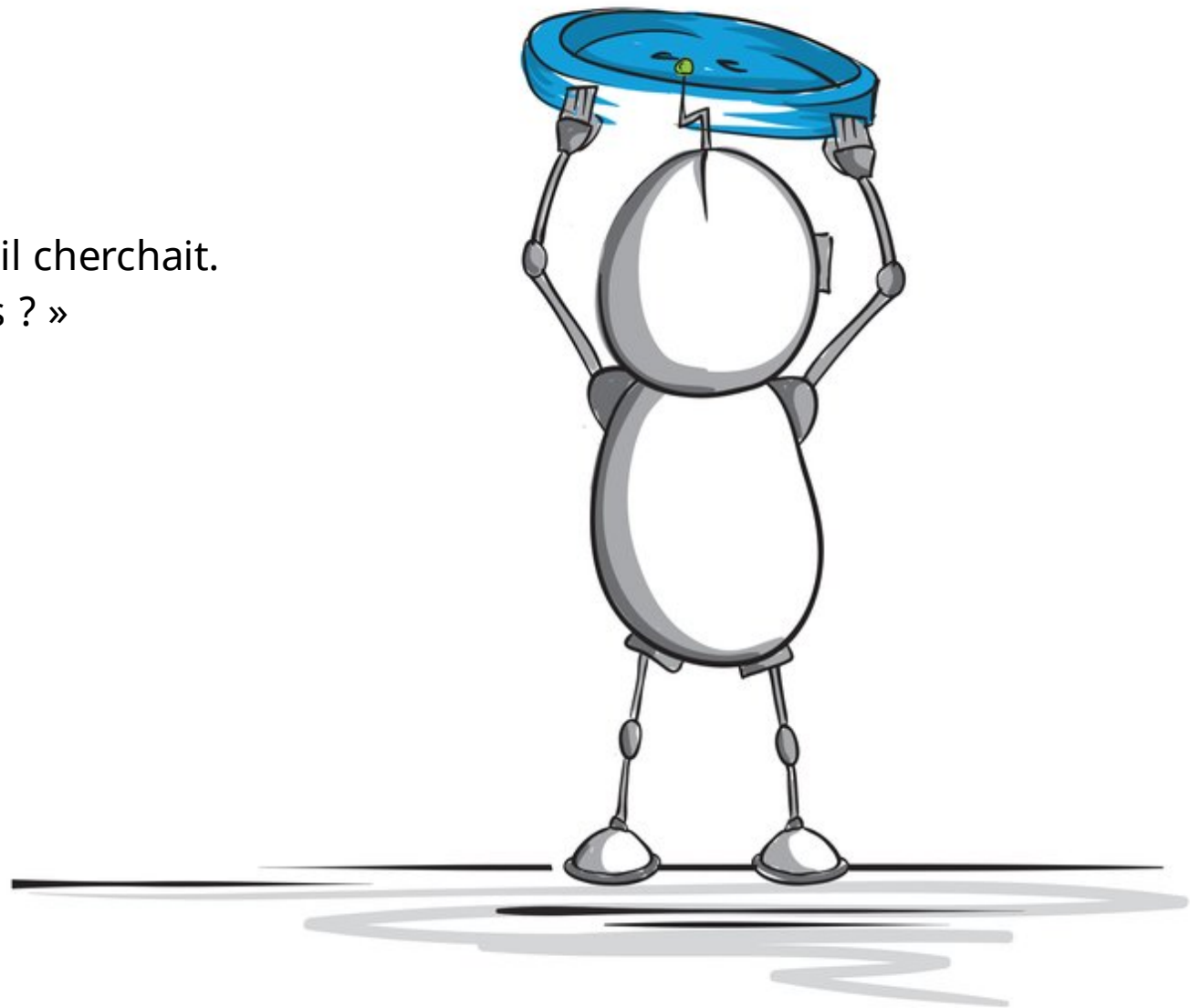
« Je dois passer de l'autre côté. Je suis sûr que c'est de là qu'il provient. »



SPLASH! « Ce n'est pas passé loin. ».
Il a attendu que les voitures passent
avant de continuer.



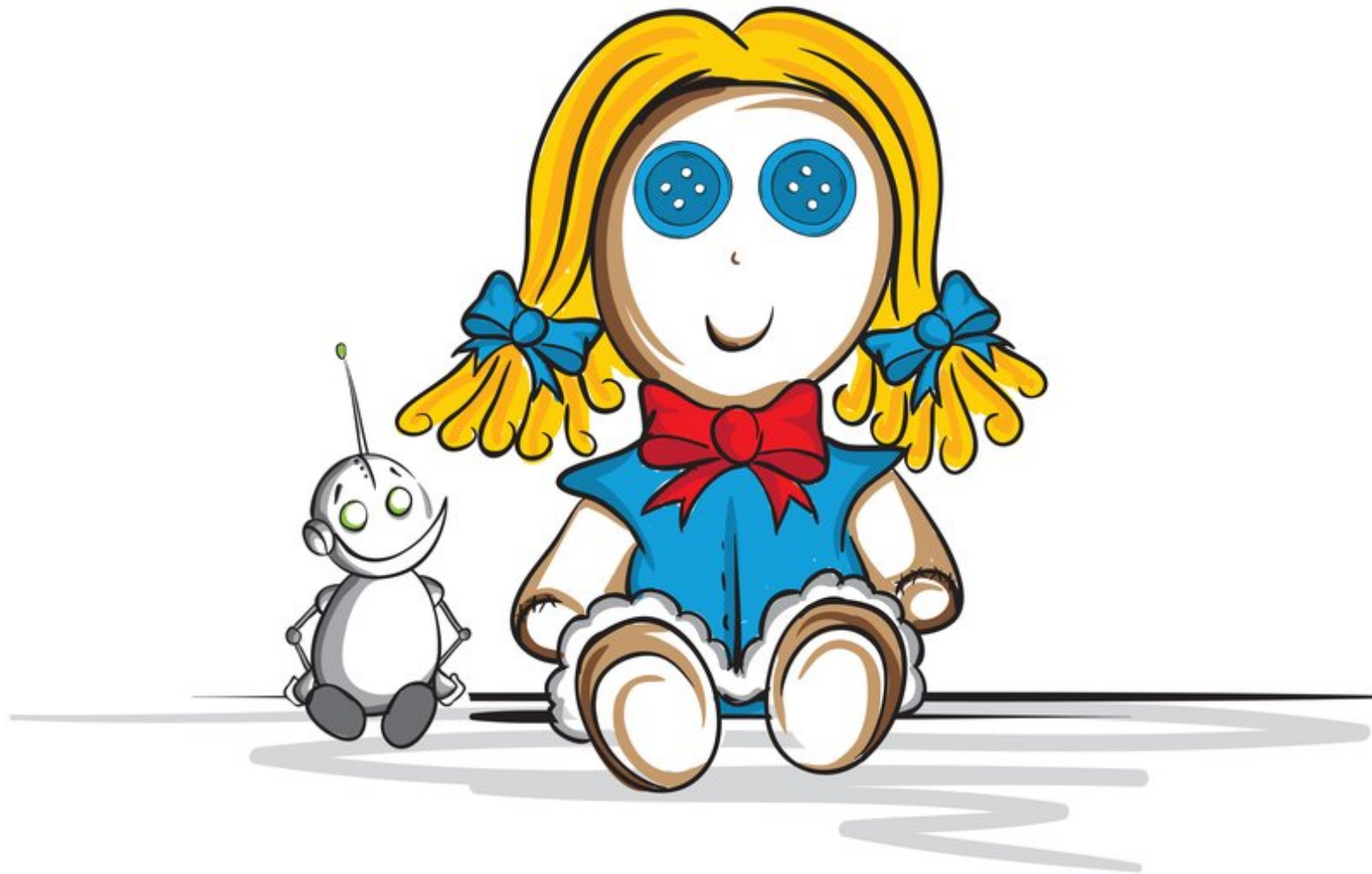
C'était peut-être lui qu'il cherchait.
« Bonjour qui êtes-vous ? »

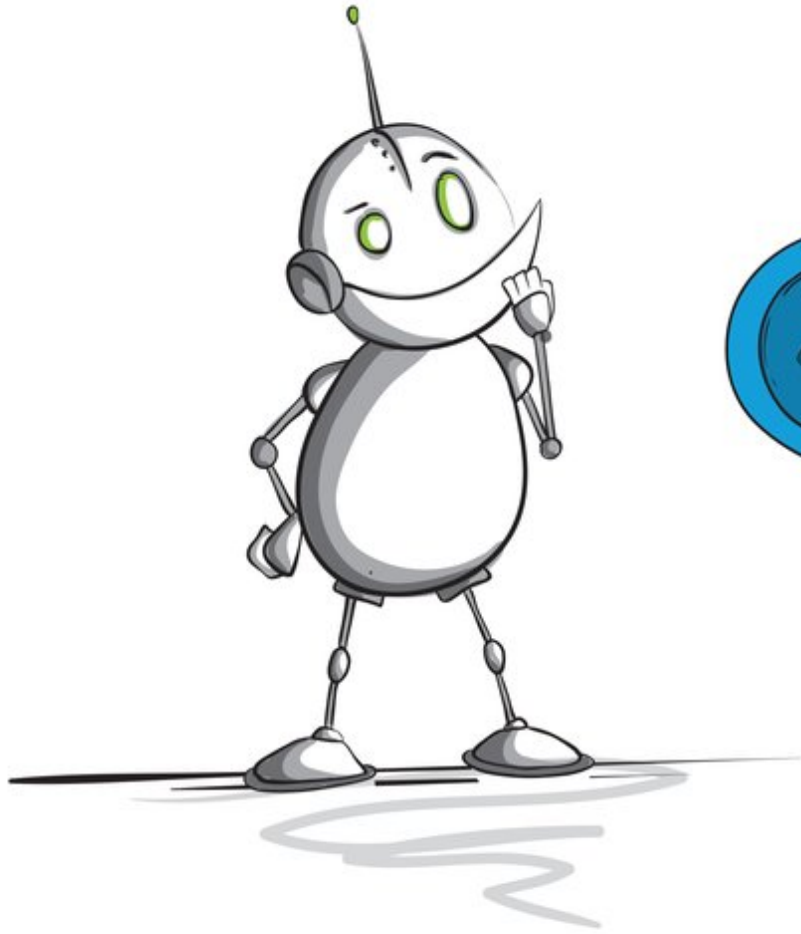




« Je suis Ruby Chiffon.»
« Je pense que c'est le vôtre »,
dit-il.

« Merci, petit robot. Peut-on être amis
? »





Story Attribution:

This story: À qui appartient ce bouton ? is translated by [Cyrille Largillier](#) . The © for this translation lies with Cyrille Largillier, 2021. Some rights reserved. Released under CC BY 4.0 license. Based on Original story: '[Whose button is this?](#)', by [Paul Kennedy](#) . © Book Dash , 2014. Some rights reserved. Released under CC BY 4.0 license.

Images Attributions:

Cover page: [Robot with two buttons](#), by [James Woolley](#) © Book Dash, 2014. Some rights reserved. Released under CC BY 4.0 license. Page 2: [Robot watching a button bounce](#), by [James Woolley](#) © Book Dash, 2014. Some rights reserved. Released under CC BY 4.0 license. Page 3: [Robot running with a button](#), by [James Woolley](#) © Book Dash, 2014. Some rights reserved. Released under CC BY 4.0 license. Page 4: [Robot near a shoe](#), by [James Woolley](#) © Book Dash, 2014. Some rights reserved. Released under CC BY 4.0 license. Page 5: [Robot swinging on a lace with a button](#), by [James Woolley](#) © Book Dash, 2014. Some rights reserved. Released under CC BY 4.0 license. Page 6: [Robot at a pedestrian go light](#), by [James Woolley](#) © Book Dash, 2014. Some rights reserved. Released under CC BY 4.0 license. Page 7: [Robot at a pedestrian stop light](#), by [James Woolley](#) © Book Dash, 2014. Some rights reserved. Released under CC BY 4.0 license. Page 8: [Robot looking at a snout](#), by [James Woolley](#) © Book Dash, 2014. Some rights reserved. Released under CC BY 4.0 license. Page 9: [Robot licked by a dog](#), by [James Woolley](#) © Book Dash, 2014. Some rights reserved. Released under CC BY 4.0 license. Page 10: [Robot holding a button at a pedestrian crossing](#), by [James Woolley](#) © Book Dash, 2014. Some rights reserved. Released under CC BY 4.0 license.

Disclaimer: https://www.storyweaver.org.in/terms_and_conditions



Some rights reserved. This book is CC-BY-4.0 licensed. You can copy, modify, distribute and perform the work, even for commercial purposes, all without asking permission. For full terms of use and attribution, <http://creativecommons.org/licenses/by/4.0/>



This book was made possible by Pratham Books' StoryWeaver platform. Content under Creative Commons licenses can be downloaded, translated and can even be used to create new stories - provided you give appropriate credit, and indicate if changes were made. To know more about this, and the full terms of use and attribution, please visit the following [link](#).

Images Attributions:

Page 11: [Robot splashed by a car](#), by [James Woolley](#). © Book Dash, 2014. Some rights reserved. Released under CC BY 4.0 license. Page 12: [Robot holding a button over its head](#), by [James Woolley](#). © Book Dash, 2014. Some rights reserved. Released under CC BY 4.0 license. Page 13: [Doll with one eye missing](#), by [James Woolley](#). © Book Dash, 2014. Some rights reserved. Released under CC BY 4.0 license. Page 14: [Robot and a doll](#), by [James Woolley](#). © Book Dash, 2014. Some rights reserved. Released under CC BY 4.0 license. Page 15: [Robot looking at buttons](#), by [James Woolley](#). © Book Dash, 2014. Some rights reserved. Released under CC BY 4.0 license.

Disclaimer: https://www.storyweaver.org.in/terms_and_conditions



Some rights reserved. This book is CC-BY-4.0 licensed. You can copy, modify, distribute and perform the work, even for commercial purposes, all without asking permission. For full terms of use and attribution, <http://creativecommons.org/licenses/by/4.0/>

À qui appartient ce bouton ?

(French)

Métal Tim se lance dans l'aventure pour rendre un bouton perdu. En chemin, il part en exploration, s'échappe miraculeusement et se fait de nouveaux amis.

This is a Level 2 book for children who recognize familiar words and can read new words with help.



Pratham Books goes digital to weave a whole new chapter in the realm of multilingual children's stories. Knitting together children, authors, illustrators and publishers. Folding in teachers, and translators. To create a rich fabric of openly licensed multilingual stories for the children of India and the world. Our unique online platform, StoryWeaver, is a playground where children, parents, teachers and librarians can get creative. Come, start weaving today, and help us get a book in every child's hand!